

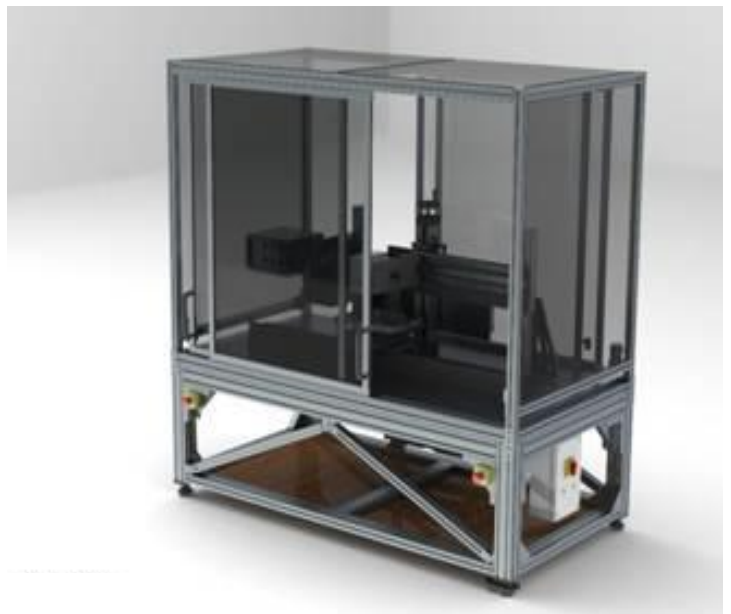


We Deliver Innovation

XY-Printers



(Shown with
optional stand)



8500 Shoal Creek Blvd, Austin, TX 78757

Tel: (512) 996-8833 x 302

Fax: (512) 873-7744

www.omegaoptics.com

Omega Optics Inkjet XY-100

OO-XY100 is a complete, high accuracy inkjet system designed for a wide range of materials deposition applications. It is also well suited for laboratory use, for small-scale or pilot-line manufacturing. OO-XY100 uses Konica Minolta inkjet printheads for highest accuracy, repeatability and reliability.

Support and Training

- Full on-site installation, training and tech support.
- IIJ offers courses in optimization of inks and fluids for use in Konica Minolta printheads and has technical staff in Europe, USA, South America and China.

Options

- Full variable image software (print a sequence of files defined in a database).
- Includes barcode library, serial numbering, date code.
- Remote control of the system via TCP/IP protocol.
- Heated vacuum platen (reduces max height of product being printed).
- Alignment camera.
- UV lamp (restricts total print area).
- Reduced accuracy slides (at small cost saving).
- Stand (shown above).

OO is prepared to produce custom systems. Please contact us for details.

* please contact our sales department at sales@omegaoptics.com to check for availability

** selection available based on customer requirements. Please contact sales department for details

XY System	<ul style="list-style-type: none"> • Fixed printhead, material scans under printer in 2 axes • Absolute accuracy of motion +/- 3 micron • Repeatability of motion +/- 1 micron • Scan speed up to 1.5 m /sec (60” /sec). 0.5m /sec recommended • A4 size vacuum chuck (total stage movement: 500 x 300mm) • Print area (full coverage, 4 heads) 297 x 210mm (11.69 x 8.27”) • Print area (single nozzle) 261 x 210mm (10.27 x 8.27”) • Vacuum pump for vacuum chuck included
Z Axis	<ul style="list-style-type: none"> • Manual Z axis: 50mm range (2”) • Cross beam is further adjustable (screwdriver) by 40mm • Max material thickness: 90mm (3.5”)
Printheads	<ul style="list-style-type: none"> • 00-XY100 supplied fitted with up to 4 x KM512X chassis printheads • Sub-drop sizes available: • KM512L = 42pl • KM512M = 14pl • KM512S = 4pl • Print width (per pass) 36mm • Printhead versions available for water-based, solvent, oil or UV cured inks • Special versions available for strong solvents, acids or alkalis
Software Features	<ul style="list-style-type: none"> • Integrated inkjet and motion control (1 click to print) • Full access to inkjet head parameters (waveform, voltage, fire frequency) • Full access to print resolution parameters. Automatic handling of multi-pass print • Accepts TIFF, Jpeg, BMP, PDF image files • Accepts ICC profiles. Manual edit of colour linearisation.
Ink Supply	<ul style="list-style-type: none"> • Direct feed from 4 x 150ml syringe (1 per printhead) • All ink tubing FEP for excellent material compatibility • Ink pressure set by syringe height
Cover	<ul style="list-style-type: none"> • Cover prevents dust ingress. • Cover materials are designed to attenuate UV light
Capping System	<ul style="list-style-type: none"> • Airtight cap for volatile inks included. • Cap fits to vacuum chuck. • Printheads lowered onto cap using manual Z axis.
Dimensions	<ul style="list-style-type: none"> • 41.3” width x 31.3” depth x 26.5” height (cover closed, without optional legs) • 1050mm width x 795mm depth x 673mm height (cover closed, without optional legs)
Power Requirements	<ul style="list-style-type: none"> • Single phase. 115V /60Hz or 220V /50Hz • Motion system: 550W approx. • Printhead drive: 18W normal operation, 140W peak on startup • PC: 350W

* please contact our sales department at sales@omegaoptics.com to check for availability

** selection available based on customer requirements. Please contact sales department for details